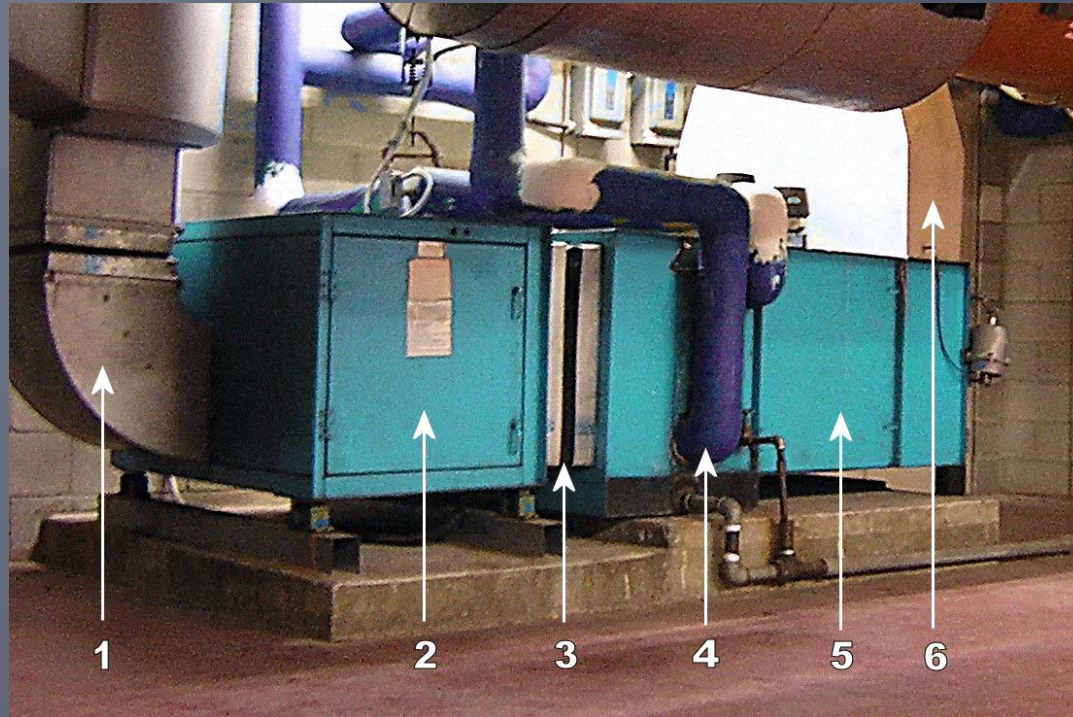


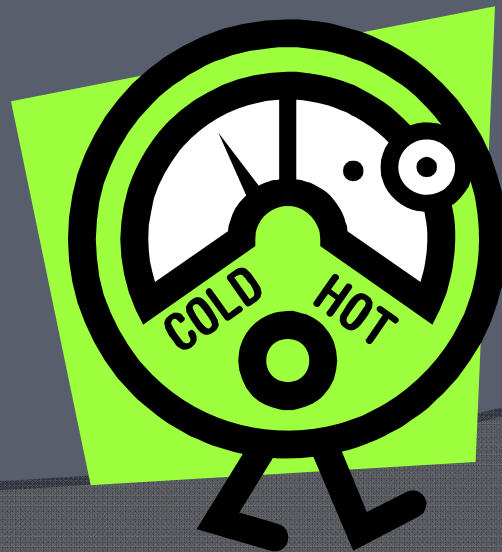
AIR HANDLING UNITS

Behind the scenes of Heating and Air Conditioning



What we know...

- Chillers provide the chilled water to reduce the air temperature in the cool side of the air ducts
- Steam provides the heat to increase the air temperature in the hot side of the air ducts



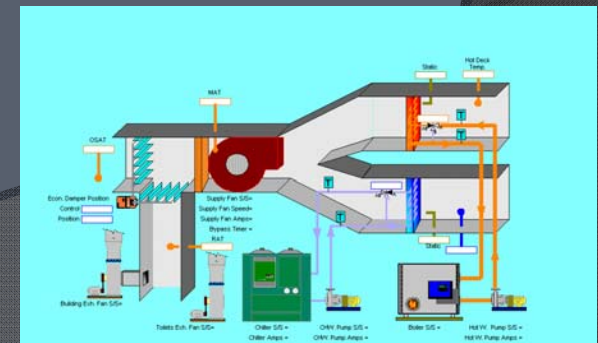
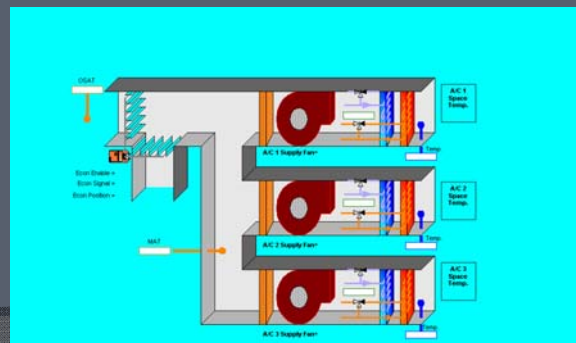
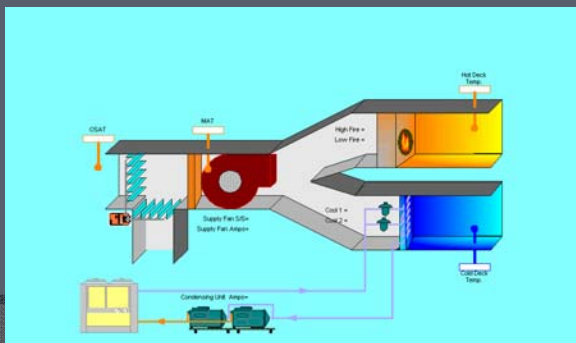
Air Handling Units

- An air handling unit or AHU is a large piece of equipment that alters the temperature and pressure of air being distributed through out a building.
- They are usually located in their own part of the building, often in the penthouse or basement.



Some New Info:

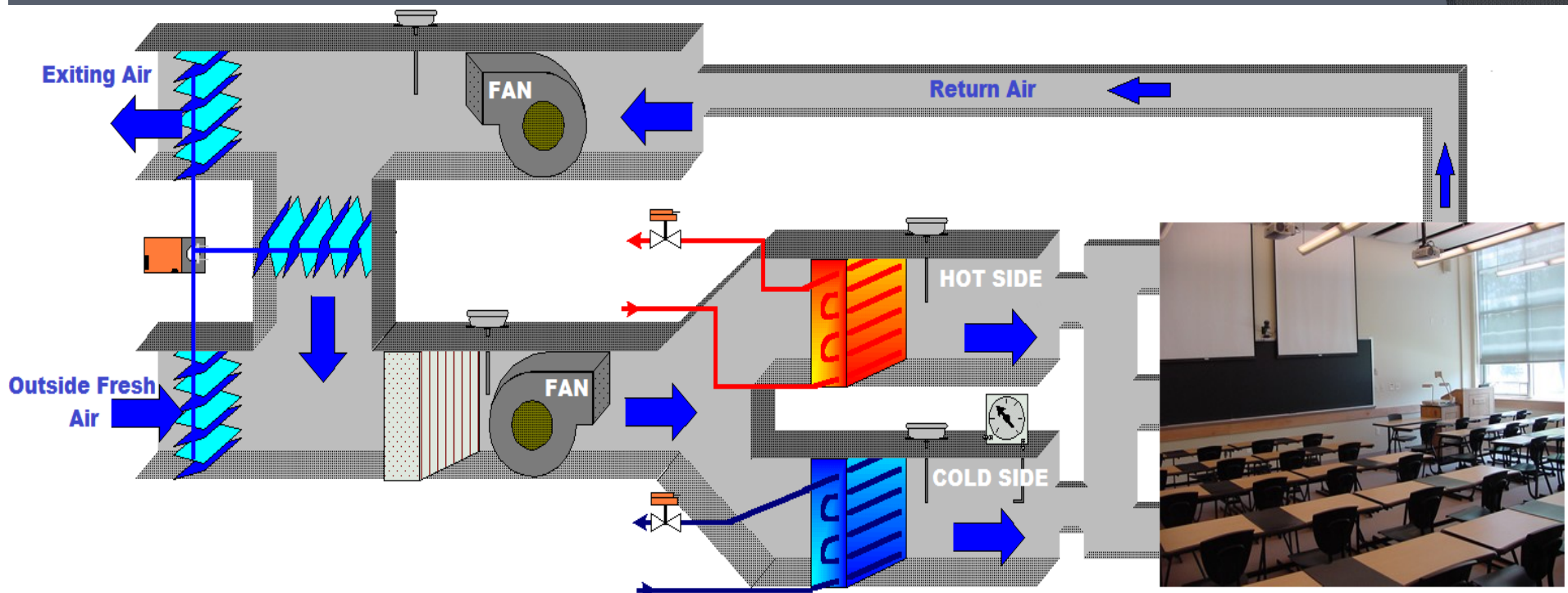
- Buildings have large air handling units to control air flow in, out, and around the structure
- There are several different types of air handling units for all buildings



The Big Picture

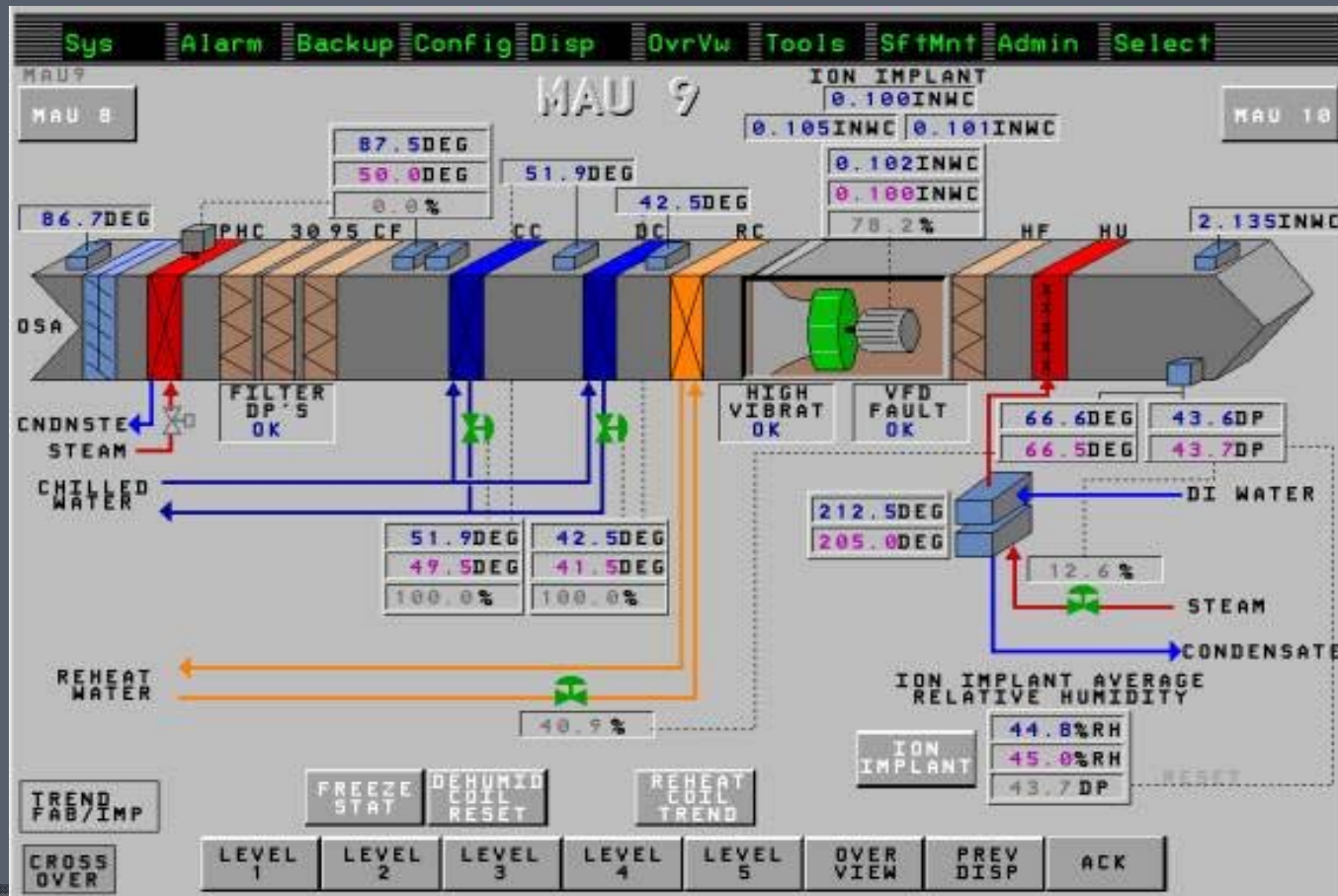
Air in Your Classroom

Seen here, the large scale air handling units feature fans, control louvers, and a separate duct work for hot and cold sides. Outside air is brought in to help the system maintain ventilation rates.



Who watches over this stuff?

Specially trained technicians monitor control screens like the one pictured below to ensure the systems are working properly and efficiency. Screens like this one are watched so you stay comfortable and productive in your building.



Smarter and Greener

- By using standard air temps set by ASHRAE*, VCU can use its air handling units more efficiently and reduce their load on electricity.
- Less electricity = Less CO₂ emissions



* American Society of Heating, Refrigerating and Air-Conditioning Engineers